

R/V Minerva

DP1 Survey Vessel

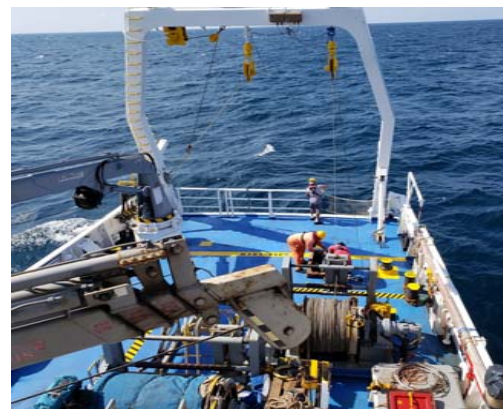
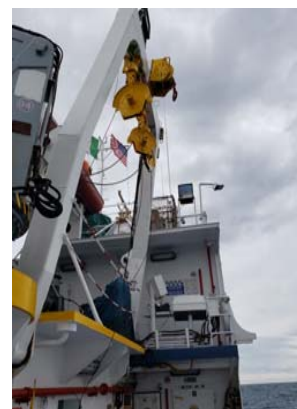


The R/V Minerva is a RINA and SOLAS classed 155' DP1 multi-role, purpose built, survey vessel with hull mounted and integrated geophysical, hydrographic, sediment sampling and oceanographic equipment. The vessel is capable of collecting geophysical data in water depths in excess of 2,500m and conducting sampling in over 3,500m.

Two dedicated and permanently equipped labs are available on board - one for data acquisition/processing and one for geotechnical and environmental sample analysis.

The R/V Minerva has 17 staterooms with a total of 33 berths and a dedicated infirmary. Each stateroom is fitted with bathroom, shower and climate control. Living spaces also include meeting and recreational rooms.

The vessel is equipped with extensive deck handling equipment including multiple A-frames, winches, and cranes making a versatile platform for a myriad of offshore survey operations.



Vessel Details

Name: Minerva
Year of Build: 2003, Reconfigured, Refit & Repowered in 2010

Dimensions

Length: 46.60m (155 ft.)
Beam: 9.0m (30 ft.)
Draft: 4.60m (15 ft.)
Gross Tonnage: 615
Net Tonnage: 184

Propulsion and Machinery

Main Engines: 2x 3508B Caterpillars
Propellers: 2 x Variable Pitch
Generators: 2 x SCANIA-MARELLI 380 kVA, 380 V
 1 x Doosan Infracore AD 222T1 446 kVA, 380 V
 1 x John Deere emergency generator 65 kVA, 380 V
Thrusters: 1 x Bow
 1 x Stern

Capacities

Endurance: 30 days
Range: 5,000 Nautical miles @ 10 knots
Operational Fuel Consumption: 2.7 – 3MT Operational; 4 – 4.2MT in transit
Max Speed: 13.0 knots
Economical Speed: 10.0 knots
Minimum Speed: Less than 1 knot
Fresh Water Storage: 70t (18,500 gallons)
Fuel Storage (Diesel): 125t (33,000 gallons)
Desalination System: 2x Inverse osmosis desalination systems with a 2.5t/day fresh water capability
Septic: ISIR Sewage Treatment System 1.5 m3/day (400 gallons)

A-Frames/Cranes

10-ton Stern Hydraulic A-frame
5-ton Starboard Hydraulic A-frame
Stern Telescoping Crane (6.6 MT – 2.7 MT)
Starboard (quarter deck) Crane (3.1MT – 1.6MT)

Winches

Stern Dredging Winch with up to 6,000m cable capacity
Stern Geophysical Equipment Winch with up to 4,000m cable capacity
Starboard (quarter deck) CTD winch with up to 4,000m cable capacity
Starboard (quarter deck) Grab Sampling Winch with up to 4,000m cable capacity
Starboard (quarter deck) Core Sampling Winch with up to 4,000m cable capacity
Starboard (quarter deck) Fishing winch with up to 2,000m of cable

Key Bridge Equipment

Radar: 2x Furuno FR 1510 Mak 3
Automatic pilot: Walzer 3000 Adaptive
DP1: Kongsberg
ECDIS: 2 x Wartsilia DPC24
Phone/Internet: 1 x VSAT, 1 x Inmarsat

Survey Equipment

Navigation/Positioning

PDS 2000 / QPS QINSy navigation software
C-Nav Satellite Corrections
Hemisphere ATLAS DGPS System
Applanix OceanMaster POS MV
IXSEA Octans MRU
Sonardyne Mini-Ranger 2 extended Range hull mounted USBL

Hydrography

SIMRAD 27Khz, 38khz and 200khz Single Beam Echosounders
Reson 7160 and 7125 hull mounted Multi-beams

Geophysical Equipment

Geoacoustics CHIRP II, 16 transducer hull mounted Sub bottom profile
GeoMarine Survey Systems Geospark
Geometrics 24 Channel UHRS Streamer
Edgetech 4200 Side scan sonar
Geometrics G882 Magnetometer and TVG

Scientific fishing

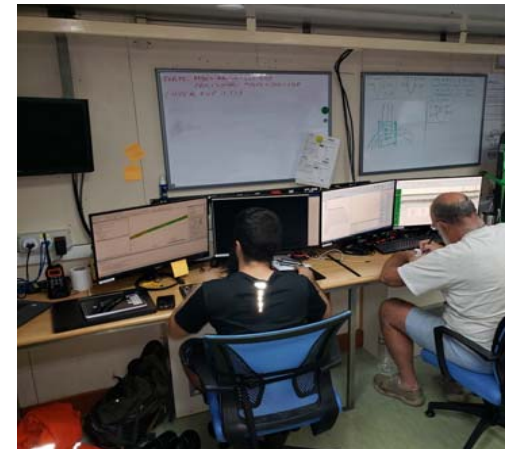
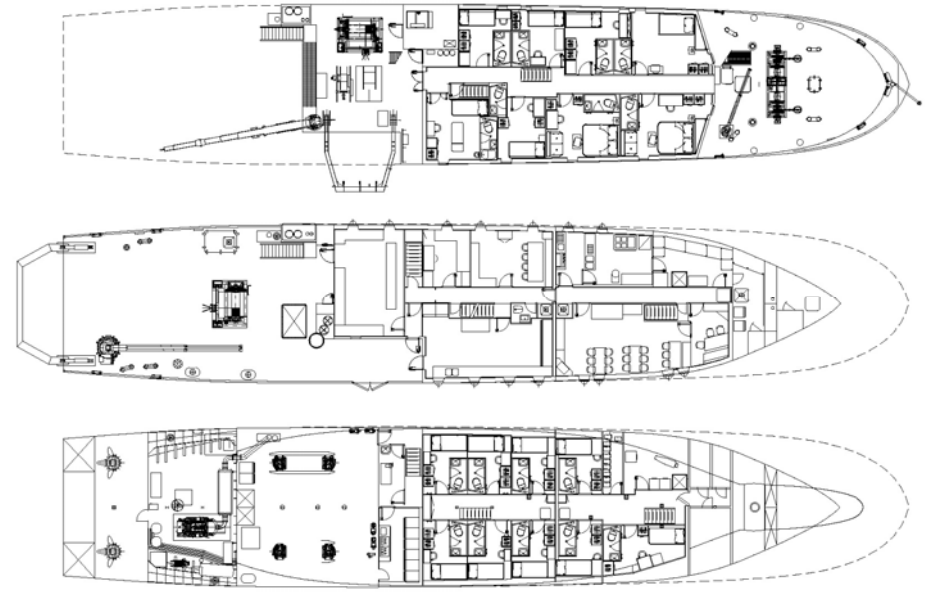
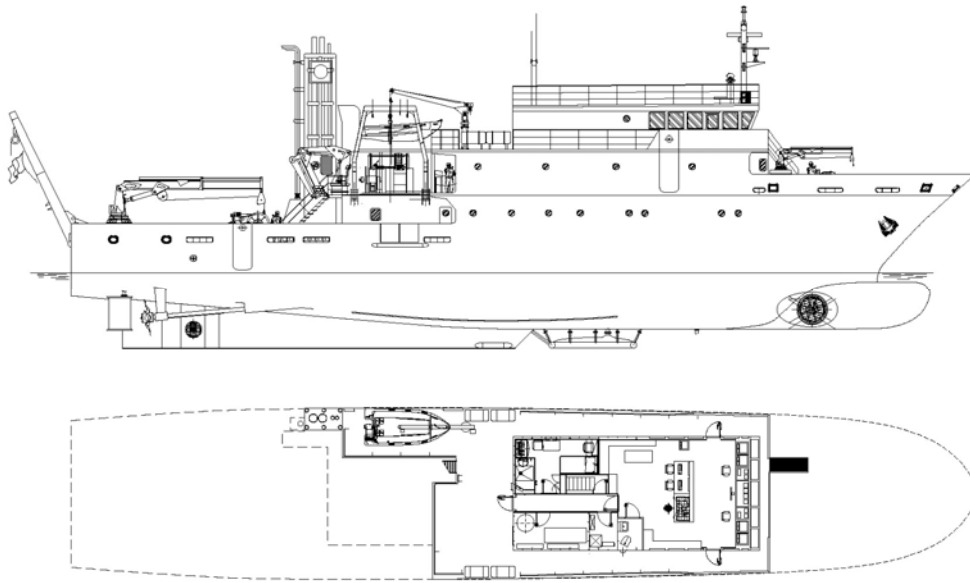
SIMRAD ITI Fishing sensors
Otter boards
2 x J.P. SELECTA Incubators

Oceanographic/Meteorology

ADCP Teledyne RDI WorkHorse 150 kHz
SBE 911 Plus and AML Minos X CTDs
SBE 21 Online conductivity measurement system
SBE Rosette with 12, 10 liter, Niskin Bottles
Aanderaa Meteorological Station
ELAGA ULTRA ANALITIC Water purification system

Sediment and Benthic Sampling

Alpine Pneumatic Vibrocore (3 to 9m core length)
GeoMarine Geo-Corer Electric Vibrocore (3 to 6m core length)
Gravity and Piston Corers (up to 10m core length)
Van Veen and Day Grab with and without video camera
Shallow Water (10 liters) and Deep Water (25 liters) Box Cores
Towed Camera Arrays



Alpine Ocean Seismic Survey, Inc.
155 Hudson Avenue, Norwood, New Jersey 07648 USA
Tel.: +1 201 768 8000
Email: info@alpineocean.com